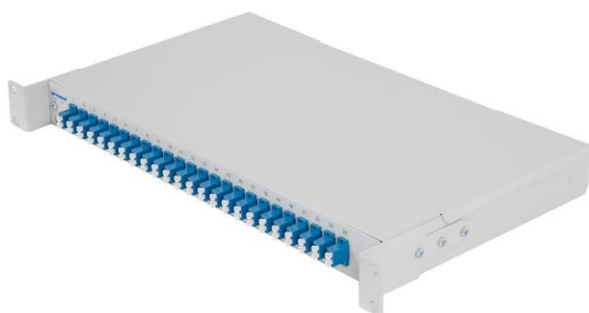


Rack Mount ZMPJ – Fixed Cabinet

Description:

The ZMPJ Fixed Cabinet introduces a compact, low cost solution for fiber optic cable termination. The ZMPJ series is ideal for rack-mounting in confined areas such as equipment enclosures where rack space is limited. The modular system allows splicing and termination up to 48 fibers in rack height 1U.



ZMPJ-1, 1U base unit
with FM-24 DLC front panel

Features:

- FTTH use - holder for microtubes included
- Designed for microtubes termination
- Compact robust design
- Fixed shelf
- Changeable front panel, various coupling adaptors
- Coupling adapters mounted on the face panel
- Accommodates up to 48 fibers in 1 rack unit
- Removable top cover provides unrestricted access
- Durable powder coat finish
- Cable strain-relief and grounding provisions
- Accepts the industry's most common connector types

Technical specifications:

PART NUMBER	FIBER CAPACITY*		RACK UNITS	DIMENSIONS (HxWxD) mm	SHIP WGT (kg)
	FM-12-XX	FM-24-XX			
ZMPJ – 1	12	48	1	44 x 432 x 265	3.6

*) Note fiber capacity is valid for standard connector types

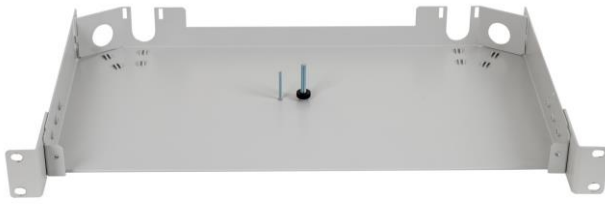
Coupling panels FM series available for the common used connector adapter types in following configuration:

FM-12-XX 12 pcs ST, FC, SC, duplex LC, E2000, ... adapters
 FM-24-XX 24 pcs ST, SC, duplex SC, E2000, ... adapters

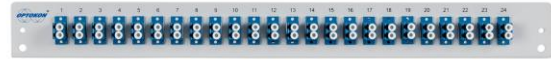
Applications:

- Rack-mount
- FTTH networks
- Customer premise remote cable drop

Product information and specifications:



ZMPJ-1
base unit without front panel and top cover



Standard front panels

FM-12-DSC	12x duplex SC adaptors
FM-24-DSC	24x duplex SC adaptors
FM-12-SC	12x single SC adaptors
FM-12-ST(FC)	12x single ST (FC) adaptors
FM-24-ST(FC)	24x single ST (FC) adaptors

Ordering Code:

ZMPJ-X	-	XX	-	XX(F)¹ X	-	CX
Version Rack Unit 1 1U		Fiber Capacity 12 – 48 fibers		Coupling Type ST ST SC(F) SC FC FC E2(F) LSH (E2000) MJ MT-RJ DSC(F) duplex SC DE2(F) duplex E2000 DLC(F) duplex LC DMU(F) duplex MU Application M Multimode S Singlemode A APC		Splice trays X: 1 – 4

Note: 1) "F" adaptors fixed by screws